

# LINE LIGHT 2

Universal lighting solution with 2 LED lighting units

LINE LIGHT 2 is a flexible lighting solution for universal application design to be used anywhere where strong, efficient and concentrated light in a specific working area is needed.

With 2 complete lighting units the LINE LIGHT 2 is the perfect lighting solution on top of the workbench, anywhere in the workshop, in the service car, in the production etc. Compared to the previous version, **LINE LIGHT 2 has been upgraded from 1000 to 2000 lumen.**

Compared to traditional 36W fluorescent tubes, LINE LIGHT 2 provides extremely bright illumination with low power consumption. It has a built-in prism that focuses the light in a 75° beam angle. This means that the lamp can be turned to provide the optimum lighting angle and illuminate the entire work area without blinding the mechanic.

It is constructed by a closed extruded acrylic profile (PMMA) with built-in prism containing a LED PCB and end-covers in black anodized aluminium. It is extremely sturdy, shock- and waterproof (IP67) to endure shocks and vibrations from industrial machinery and to resist wet and dirty workshop environment.

LINE LIGHT 2 consists of 2 lighting units 1234mm incl 80W power supply unit, 8 m cable and complete suspension fittings. As LINE LIGHT is a low voltage (24V DC) system, you can easily do the installation yourself. All basic fittings are supplied with each kit together with power supply and cable.

Available as accessory, the LINE LIGHT DIMMER lets you adjust the light intensity seamlessly.

- “Unbreakable”- extremely sturdy and shockproof
- Waterproof to resist wet and dirty workshop environment
- Low voltage 24V DC
- Technical lifetime of LEDs 100.000 hours
- Made in Denmark

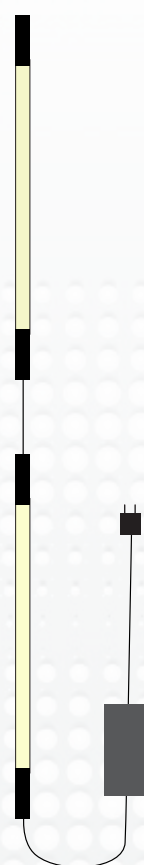
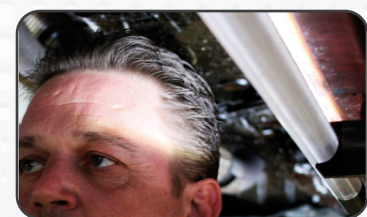
## TECHNICAL SPECIFICATIONS

2 x 156 SMD LED  
 189 lm/W  
 2 x 2000 Lumen  
 2 x 2800 Lux@0,5m  
 75° Beam angle  
 24V DC  
 38 W  
 IK07  
 IP67  
 2 x Ø25 x 1234mm  
 2,1 kg

EU DESIGN  
PATENT  
 1882523



Double lumen output



**LINE LIGHT 2**  
 Item no. 03.5202

